



**Thinking
Stockport**



**Achieving as a
Team**



**Working with
Ambition**



**Showing everyone
Respect**

Job Profile and Working for Stockport

Our Council

Join us at Stockport Council – MJ Local Authority of the Year 2025

Our employees are our **greatest asset**. We're proud of the way we provide vital frontline services every day and work together, as **one team**.

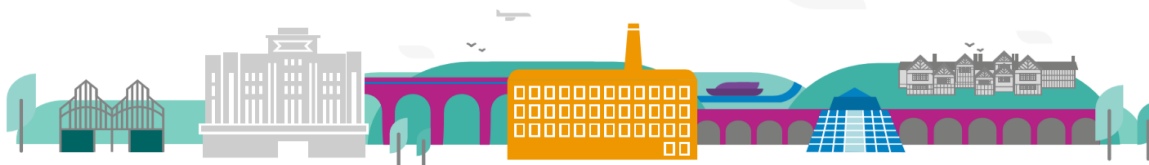
Our 4 **core values** as shown above, run through everything that we do, and we aim to stay **true** to them regardless of the challenges that we may face.

To **support** our values, we have policies, guidance and procedures around health, safety and welfare, customer care, emergency planning and security that all our **colleagues** are adhering and working to.

We also **pride** ourselves on our commitment to wellbeing and inclusivity of our colleagues and residents.

You can find out more about working for Stockport Council and some of the benefits that we offer our employees at <https://greater.jobs/locations/stockport/>





Ambitious Stockport, creating opportunities *for everyone*

About the Job

Role:

Inclusion Adviser

Service Area:

School Effectiveness

Directorate:

Services to People - Childrens

Salary Grade:

Soulbury 5-8 plus 3 SPA points

Main Purpose of the Job

To deliver the strategic outcomes of the School Effectiveness Service Area by developing the work of the staff within schools to improve the inclusive practice and outcomes in Stockport schools.

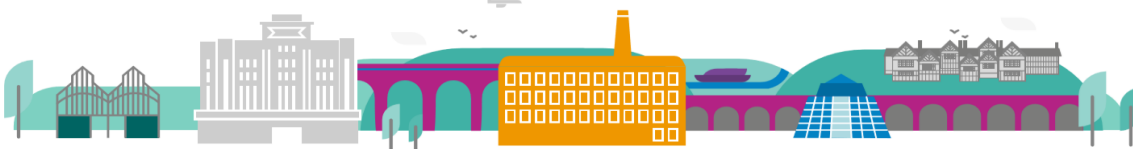
The Inclusion Adviser has responsibility to:

- Develop the inclusive practice in order to improve provision and outcomes in the schools that are allocated to them
- Balance the needs of the schools with the LA and service priorities
- Promote the safeguarding and welfare of children and young people

Key Responsibilities

Please note that school-based tasks will take priority during term time; other tasks, especially those in relation to the wider Local Authority activity can take place throughout the calendar year.

- Support the self-evaluation processes within school in respect of the inclusion and standards agenda, particularly taking account of those children who are disadvantaged, have been supported by a social worker, have SEND and/or EAL needs.
- Provide a professional view about the quality of provision and practice within the school, supported by relevant evidence, to their line manager
- Facilitate practice change in schools, across the inclusion and standards agenda, to enable schools to provide a high-quality offer to all children. This will include working across all areas of Special Educational Needs and across all phases of the school, including resourced provision where appropriate.
- Reviewing current practice within schools, providing advice at all levels (eg: senior leaders, SENCO, class teacher, support staff) and ensuring a high level of accountability in respect of the advice provided
- Recording and reporting all advice given in line with service requirements
- Provide advice and guidance to schools to implement OAIP in all phases of the school



Ambitious Stockport, creating opportunities *for everyone*

- Supporting the delivery of Success at SEN Support, by reviewing plans, reviewing provision and making recommendations
- Liaise and work collaboratively in partnership well with other services (eg: Family Help, Startwell, Attendance, Social Care etc) to support the high-quality offer for children

- Develop and deliver key programmes of CPD as required by the service both for schools and Local Authority services (eg: Family Help, Social care, Startwell, Attendance, HAF providers, workforce development etc)
- Deliver professional development sessions in school as required
- Contribute to the development and writing of professional development materials for schools and Local Authority Services
- Contribute to the QA work of Education Services in respect of the SEND processes both at SEN Support and EHCP level
- Maintain professional learning about inclusion and standards to a high standard.
- Assume the role of 'lead learner' for a specific area of work for the service and take responsibility for leading and developing whole service expertise
- Work closely with, and engage in wider Local Authority projects that support vulnerable children across the calendar year, to promote strong inclusive practice (eg; HAF, transition projects etc)
- Follow all service/council policies and protocols
- Complete all record keeping in accordance with the service requirements
- Write high quality material for a variety of audiences, both schools and the Local Authority, as required

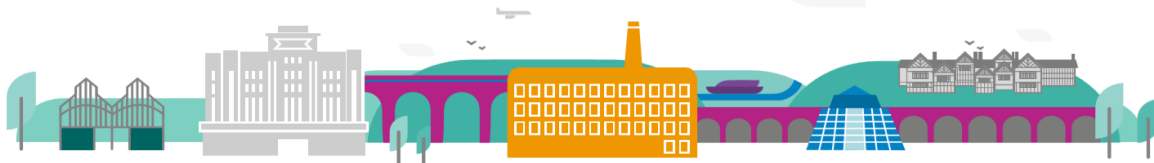
- To work positively and inclusively with colleagues and customers so that the Council provides a workplace to deliver a service that does not discriminate against people on the grounds of their age, disability, gender reassignment, marriage, civil partnership, pregnancy, maternity, race, religion, belief, sex, or sexual orientation.

- To fulfil personal requirements, where appropriate, with regards to Council policies and procedures, standards of attendance, health, safety and welfare, customer care, emergency, evacuation, security and promotion of the Council's priorities.

Additional Information

The responsibilities set out in this document, in the advert and any additional information are intended to provide a flavour of the work you will carry out. It is not possible to include everything you will be asked to undertake, and we expect all colleagues to work flexibly according to business needs and to enhance your own development. Your skills, abilities and training needs will be taken into account and discussed with you when any significant changes to your role are needed. In line with our flexible approach you may be required to work from home for a proportion of your time or from any of the Council's sites across the borough.

The Council is an inclusive employer and holds the Disability Confident and Armed Forces Covenant accreditations. If you have a disability, we will support you by implementing reasonable adjustments to enable you to perform your role.



Ambitious Stockport, creating opportunities *for everyone*

About You

Please use your application to tell us how well you meet the criteria listed below as these are the key skills, experience, technical expertise and qualifications needed to be successful in the role. We will then use all the information you provide in your application to help us decide whether you are shortlisted for interview. Any interview questions or additional assessments such as tests or presentations may also be broadly based on these criteria:

- Working to the Council's values and behaviours by:
 - Keeping the people of **Stockport** at the heart of what we do
 - Succeeding as a **team**, collaborating with colleagues and partners
 - Driving things forward with **ambition**, creativity and confidence
 - Showing value and **respect** to our colleagues, partners and customers.
- Qualified Teacher Status
- Experience of being a highly skilled inclusive practitioner
- Demonstrate experience of building and maintaining strong relationships
- Demonstrate an awareness of the complexities of the relationship between schools and the Local Authority
- Ability to work well with professional groups and with individual colleagues, and lead professional discussion within these contexts
- Ability to remain focussed upon the strategic objective irrespective of the task that is being completed
- Capacity to lead others well and provide professional advice to a high standard
- The technical knowledge to complete the key tasks listed above (eg; knowledge of the Code of Practice, OAIP, excellent classroom practice etc)
- Commitment to continued personal development and be willing to learn any technical knowledge required to manage areas of responsibility well
- Work independently
- Manage your time efficiently, prioritising appropriately when necessary
- Compile reports for a variety of audiences efficiently and to a high standard
- Analyse and interpret educational data well
- Maintain your own professional development and remain professionally curious
- Contribute to the ongoing professional development of the service
- Be prepared to undertake any reasonable tasks required by the service

