



Job Profile and Working for Stockport

Our Council

Join us at Stockport Council – MJ Local Authority of the Year 2025

Our employees are our **greatest asset**. We're proud of the way we provide vital frontline services every day and work together, as **one team**.

Our 4 **core values** as shown above, run through everything that we do, and we aim to stay **true** to them regardless of the challenges that we may face.

To **support** our values, we have policies, guidance and procedures around health, safety and welfare, customer care, emergency planning and security that all our **colleagues** are adhering and working to.

We also **pride** ourselves on our commitment to wellbeing and inclusivity of our colleagues and residents.

You can find out more about working for Stockport Council and some of the benefits that we offer our employees at <https://greater.jobs/locations/stockport/>





Ambitious Stockport, creating opportunities *for everyone*

About the Job

Role:	Senior EAL Consultant
Service Area:	Ethnic Diversity Service
Directorate:	Services to People - Childrens
Salary Grade:	Soulbury EIP 9-12 plus 3 SPA points

Main Purpose of the Job

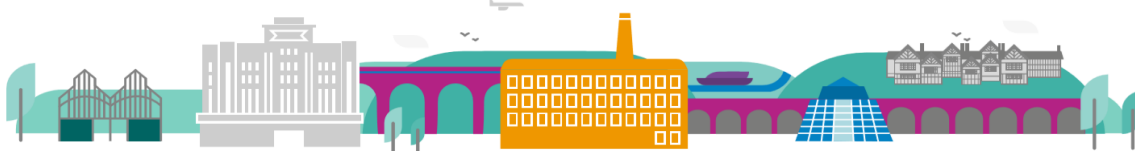
To deliver the strategic outcomes of the Ethnic Diversity Service by leading the EAL Consultant team and working in partnership with schools, leaders, teachers and other professionals in an advisory role to develop EAL best practice across schools and improve outcomes for EAL learners.

The Senior EAL Consultant has responsibility to:

- Develop the EAL practice in order to improve provision and outcomes in schools
- Lead the EAL Consultant team
- Use their professional expertise to support, develop and maintain high quality processes required by the service and the LA
- Promote the safeguarding and welfare of children and young people

Key Responsibilities

- Provide quality professional supervision and coaching to colleagues
- Support the Head of Service to strategically develop service delivery and activity to ensure EAL children and schools receive highest quality support across all key stages
- Oversee referrals, workstreams and allocation of responsibilities and activities to the team
- Oversee delivery of key programmes of CPD as required by the service
- Coordinate and contribute to development of professional development materials and resources to support EAL
- Have oversight of the provision and deployment of bilingual assistant provision
- Use data sets to monitor and analyse EAL attainment and inform priorities for EAL support in schools across the LA
- Coordinate, promote and contribute to development and delivery of key programmes for diversity, equality and inclusion in schools as required by the service
- Coordinate, develop and deliver professional development sessions in schools and to other professionals
- Facilitate practice change in EYFS, primary and secondary schools to enable them to provide a high quality offer to EAL children and their families



Ambitious Stockport, creating opportunities *for everyone*

- Provide advice, consultancy and guidance to schools to enable them to implement best EAL practice
- Work flexibly to deliver high-quality service provision to schools and other partners
- Support the delivery of high quality EAL support by creating and reviewing plans, reviewing provision and making recommendations
- Conduct observations and specialist language assessments as required
- Work in line with Local Authority priorities
- Complete all paperwork in line with service policies and processes
- Work collaboratively both within the team and across LA services

Additional Information

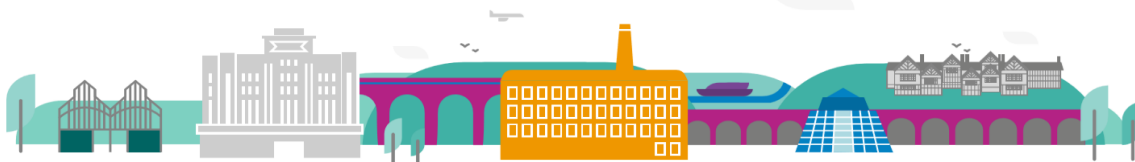
The responsibilities set out in this document, in the advert and any additional information are intended to provide a flavour of the work you will carry out. It is not possible to include everything you will be asked to undertake, and we expect all colleagues to work flexibly according to business needs and to enhance your own development. Your skills, abilities and training needs will be taken into account and discussed with you when any significant changes to your role are needed. In line with our flexible approach you may be required to work from home for a proportion of your time or from any of the Council's sites across the borough.

The Council is an inclusive employer and holds the Disability Confident and Armed Forces Covenant accreditations. If you have a disability, we will support you by implementing reasonable adjustments to enable you to perform your role.

About You

Please use your application to tell us how well you meet the criteria listed below as these are the key skills, experience, technical expertise and qualifications needed to be successful in the role. We will then use all the information you provide in your application to help us decide whether you are shortlisted for interview. Any interview questions or additional assessments such as tests or presentations may also be broadly based on these criteria:

- Working to the Council's values and behaviours by:
 - Keeping the people of **Stockport** at the heart of what we do
 - Succeeding as a **team**, collaborating with colleagues and partners
 - Driving things forward with **ambition**, creativity and confidence
 - Showing value and **respect** to our colleagues, partners and customers.
- Qualified Teacher Status (QTS)
- Experience of being a highly skilled EAL practitioner
- Experience and evidence of effective team leadership in a school leadership team or educational setting
- Evidence of appropriate learning in leadership
- Capacity to lead others well: challenging, supporting and coaching appropriately
- Demonstrate experience of building and maintaining strong relationships



Ambitious Stockport, creating opportunities *for everyone*

- Demonstrate an awareness of the complexities of the relationship between schools and the Local Authority
- Ability to work sensitively and effectively with children and families from varied cultural, religious and linguistic backgrounds, providing effective support across the whole school age range
- Ability to work well with professional groups and with individual colleagues, and lead professional discussion within these contexts
- Ability to remain focussed upon the strategic objective irrespective of the task that is being completed
- The specialist technical EAL knowledge to complete the key tasks listed above
- Commitment to continued personal development and be willing to learn any technical knowledge required to manage areas of responsibility well
- Work independently
- Manage your time efficiently, prioritising appropriately when necessary
- Compile reports for a variety of audiences efficiently and to a high standard
- Analyse and interpret educational data well
- Maintain your own professional development and remain professionally curious
- Contribute to the ongoing professional development of the service