



## Job Profile and Working for Stockport

### Our Council

Join us at Stockport Council – Best for Inclusion winner at the Greater Manchester Good Employment Awards 2026

Our employees are our **greatest asset**. We're proud of the way we provide vital frontline services every day and work together, as **one team**.

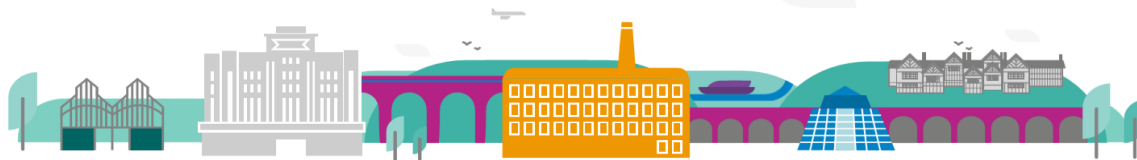
Our 4 **core values** as shown above, run through everything that we do, and we aim to stay **true** to them regardless of the challenges that we may face.

To **support** our values, we have policies, guidance and procedures around health, safety and welfare, customer care, emergency planning and security that all our **colleagues** are adhering and working to.

We also **pride** ourselves on our commitment to wellbeing and inclusivity of our colleagues and residents.

You can find out more about working for Stockport Council and some of the benefits that we offer our employees at <https://greater.jobs/locations/stockport/>





## Ambitious Stockport, creating opportunities *for everyone*

### About the Job

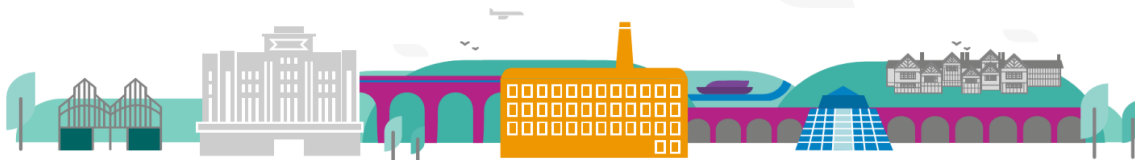
|                      |                                |
|----------------------|--------------------------------|
| <b>Role:</b>         | Experienced Social Worker      |
| <b>Service Area:</b> | Stockport Family               |
| <b>Directorate:</b>  | Services to People - Childrens |
| <b>Salary Grade:</b> | SO3                            |

### Main Purpose of the Job

As a social worker who has consolidated their knowledge and experience the post holder will have successfully completed their ASYE and SSYE. The social worker will be providing restorative and systemic social work practice to ensure an effective response to children, young people, families and carers at all levels of intervention including early help through to protection and permanence via children's social care. Social workers will offer a range of support and interventions including assessments and respond to incidents of support, concern, crisis and immediate harm. Working in line with Stockport Family's practice standards the social worker will produce high quality assessments, capturing the voice and experience of the children and young people, accurately assessing and managing the highest level of risk and complexity.

### Key Responsibilities

- To effectively manage a case load, often complex, and produce high quality (and in specific roles, specialist/evidence-based) analytical assessments, including for court, across Stockport Family identifying strengths, risks, support and protection needs and deciding on the most effective methods of intervention.
- To draw up plans and review the progress of the plans in accordance with agreed and statutory timeframes.
- To accurately assess and manage higher levels of risk and complexity, as an acknowledgment of experience and skill.
- To work closely with all colleagues across Stockport family to ensure a coordinated and consistent response to children, young people, families and carers regardless of the level of need to secure the best outcomes.
- To identify and secure the most appropriate service to support and safeguard children, young people and families.
- To conduct both planned and spontaneous visits, writing detailed reports, and engaging in direct work with children and families, such as life story work.
- To keep accurate and timely records in line with local and statutory requirements.
- To be a designated link for a school or schools within your locality and to work with the team around that school to provide safeguarding expertise and support within the school community.

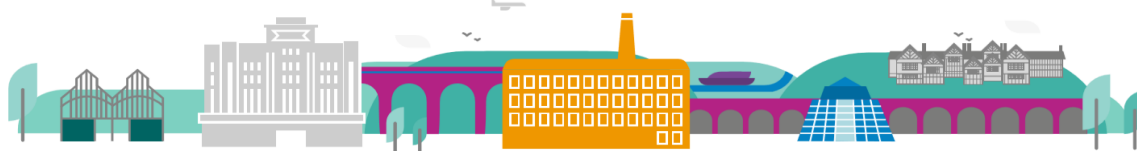


## Ambitious Stockport, creating opportunities *for everyone*

- To ensure that service user views and the voice of the child is incorporated into all your work.
- To work dynamically within Stockport Family and with partners to identify pathways for support for children and families, using strengths-based principles.
- To facilitate training and support groups for targeted families.
- To be a champion for Stockport Family and the principles of restorative approaches and of quality conversations, collaboration and minimal points of transfer.
- To practice and promote a culture which places children, young people and families at the heart of the service.
- To work in accordance with legislative requirements and local, regional and national policy and procedures.
- To keep up to date with national and local developments relevant to the service area.
- To work collaboratively and creatively with schools, colleges, other local authorities, other agencies, the voluntary sector and other groups to coordinate interventions for vulnerable children and young people.
- To understand and embrace restorative practice and a strengths-based approach to work with children, families and communities.
- Contribute to the development of an effective and well-functioning team by using emotionally intelligent social work practice i.e. self-awareness, interpersonal awareness, self-management and interpersonal relationship management.
- To have demonstrable knowledge of early help assessment/team around the child ,child protection, safeguarding children, and the care of looked after children and plans for permanence and apply this to practice.
- To perform any other duties that correspond reasonably with the general character of the post and that are commensurate with its level of responsibility.
- To be a car driver or have the ability to get to visits and between bases in a timely manner.
- To work positively and inclusively with colleagues and customers so that the Council provides a workplace to deliver a service that does not discriminate against people on the grounds of their age, disability, gender reassignment, marriage, civil partnership, pregnancy, maternity, race, religion, belief, sex, or sexual orientation.
- To fulfil personal requirements, where appropriate, with regards to Council policies and procedures, standards of attendance, health, safety and welfare, customer care, emergency, evacuation, security and promotion of the Council's priorities.

### **Additional Information**

The responsibilities set out in this document, in the advert and any additional information are intended to provide a flavour of the work you will carry out. It is not possible to include everything you will be asked to undertake, and we expect all colleagues to work flexibly according to business needs and to enhance your own development. Your skills, abilities and training needs will be taken into account and discussed with you when any significant changes to your role are needed. In line with our flexible approach you may be required to



## Ambitious Stockport, creating opportunities *for everyone*

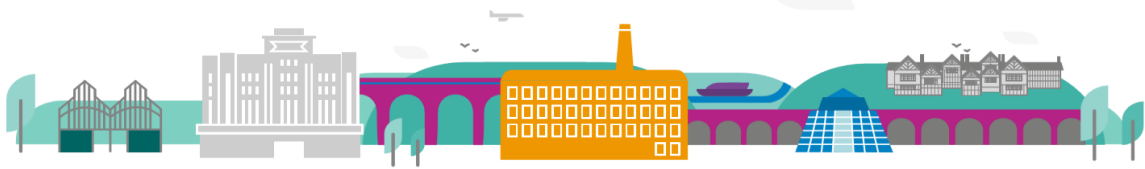
work from home for a proportion of your time or from any of the Council's sites across the borough.

The Council is an inclusive employer and holds the Disability Confident and Armed Forces Covenant accreditations. If you have a disability, we will support you by implementing reasonable adjustments to enable you to perform your role.

### About You

Please use your application to tell us how well you meet the criteria listed below as these are the key skills, experience, technical expertise and qualifications needed to be successful in the role. We will then use all the information you provide in your application to help us decide whether you are shortlisted for interview. Any interview questions or additional assessments such as tests or presentations may also be broadly based on these criteria:

- Working to the Council's values and behaviours by:
  - Keeping the people of **Stockport** at the heart of what we do
  - Succeeding as a **team**, collaborating with colleagues and partners
  - Driving things forward with **ambition**, creativity and confidence
  - Showing value and **respect** to our colleagues, partners and customers.
- A recognised Social Work Qualification.
- Current (or pending) Social Work England registration.
- Completion of Practice Observation & Progression Programme
- Working knowledge and understanding of child protection, safeguarding children and issues in relation to looked after children.
- Working knowledge and experience of preventing escalation of need and the application of early help offer/services to children and families.
- Experience of multi-agency working in relation to meeting children, young people and family needs paying full regard to information sharing protocols and best practice.
- Experience of working with complex situations with a focus on problem solving.
- Ability to communicate clearly (oral and written) and to work in partnership with colleagues, other agencies, service users and carers.
- Knowledge of relevant legislation and social policy issues; and of different approaches to social work practice including restorative and systemic approaches with children and families.
- Knowledge of early trauma and the impact of this on a child's development, behaviour and attachments
- Demonstrable knowledge, experience and skill in social work assessments.
- Ability to work in an unpredictable environment and confidently assess risk and children's needs.
- Demonstrated commitment to anti-oppressive and anti-racist practice fully considering the diverse needs of children and families.
- Positive commitment to further training, self-development, and willingness to undertake training
- Ability to drive and use of a car is essential for this role (alternative arrangements will be made for disabled applicants who are unable to drive due to their disability)



**Ambitious Stockport, creating opportunities** *for everyone*