

## Job Profile and Working for Stockport



### Stockport

to keep the people of Stockport at the heart of what we do.

### Team

to succeed as a team, collaborating with colleagues and partners.

### Ambition

to drive things forward with ambition, creativity and confidence.

### Respect

to value and respect our colleagues, partners and customers.

## Our Council

Our employees are our **greatest asset**. We're proud of the way we provide vital frontline services every day and work together, as **one team**.

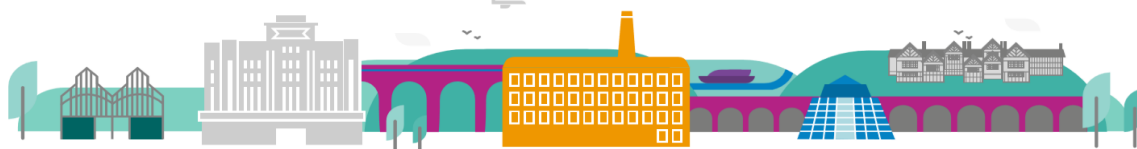
Our 4 **core values** as shown above, run through everything that we do, and we aim to stay **true** to them regardless of the challenges that we may face.

To **support** our values, we have policies, guidance and procedures around health, safety and welfare, customer care, emergency planning and security that all our **colleagues** are adhering and working to.

We also **pride** ourselves on our commitment to wellbeing and inclusivity of our colleagues and residents.

You can find out more about working for Stockport Council and some of the benefits that we offer our employees at <https://greater.jobs/locations/stockport/>





## About the Job

|                      |                                        |
|----------------------|----------------------------------------|
| <b>Role:</b>         | Experienced Social Worker              |
| <b>Service Area:</b> | Prevention, Wellbeing and Independence |
| <b>Directorate:</b>  | Services to People - Adults            |
| <b>Salary Grade:</b> | SO3                                    |

### Main Purpose of the Job

- To work as an experienced Social Worker within the Adults Front Door Team specialising within the Making Every Adult Matter programme.
- To hold a short-term case load for assessment under the Care Act 2014 working alongside other colleagues and teams in a preventative and strengths-based way
- To complete timely assessments under section 9 of the Care Act 2014
- Respond to statutory and non-statutory safeguarding issues
- Work with the residents of Stockport to maximise their strengths and assets
- Contribute Social Work expertise to the wider multi-disciplinary professionals within the front door team and Making Every Adult Matter Hub.

### Key Responsibilities

- To undertake timely assessments under the Care Act 2014
- To work closely with the Making Every Adult Matter programme and wider Navigator team.
- To undertake professional assessments, to assist people to manage risk, to identify Strengths based and person-centred outcomes in line with Section 1,2, 9 and 10 of the Care Act 2014.
- To undertake Mental Capacity assessments and best interest meetings under the Mental Capacity Act 2005 as part of Social Work role.
- To provide information and advice to help people stay healthy, plan for their future needs, use services effectively, take responsibility for their own health and care, and maximise the impact of prevention and recovery services.
- To maintain continuing professional development and ensure compliance with Social Work England registration requirements.
- To promote and safeguard the welfare of children and vulnerable adults.
- To undertake specific projects in relation to service development as required.



- Maintain essential records, input and maintain records on the IT system as required.
- To take responsibility for a caseload of complex cases, working alongside other professionals, managing conflict and risk and exercising professional autonomy and judgement.
- To act as a knowledge resource for other staff in respect of day-to-day practice
- To work positively and inclusively with colleagues and customers so that the Council provides a workplace to deliver a service that does not discriminate against people on the grounds of their age, disability, gender reassignment, marriage, civil partnership, pregnancy, maternity, race, religion, belief, sex, or sexual orientation.
- To fulfil personal requirements, where appropriate, with regards to Council policies and procedures, standards of attendance, health, safety and welfare, customer care, emergency, evacuation, security and promotion of the Council's priorities.

### **Additional Information**

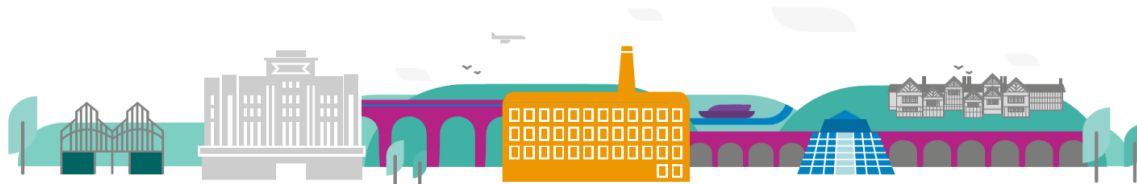
The responsibilities set out in this document, in the advert and any additional information are intended to provide a flavour of the work you will carry out. It is not possible to include everything you will be asked to undertake, and we expect all colleagues to work flexibly according to business needs and to enhance your own development. Your skills, abilities and training needs will be taken into account and discussed with you when any significant changes to your role are needed. In line with our flexible approach you may be required to work from home for a proportion of your time or from any of the Council's sites across the borough.

The Council is an inclusive employer and holds the Disability Confident and Armed Forces Covenant accreditations. If you have a disability, we will support you by implementing reasonable adjustments to enable you to perform your role.

## **About You**

Please use your application to tell us how well you meet the criteria listed below as these are the key skills, experience, technical expertise and qualifications needed to be successful in the role. We will then use all the information you provide in your application to help us decide whether you are shortlisted for interview. Any interview questions or additional assessments such as tests or presentations may also be broadly based on these criteria:

- Working to the Council's values and behaviours by:
  - Keeping the people of **Stockport** at the heart of what we do
  - Succeeding as a **team**, collaborating with colleagues and partners
  - Driving things forward with **ambition**, creativity and confidence
  - Showing value and **respect** to our colleagues, partners and customers.
- **Experienced** Social Worker registered with Social Work England



- To have already **completed the ASYE programme**, and have minimum two years' experience in a social worker role, with ASYE certificate
- To have completed or be working towards the Experienced Social Worker Assessment Process (ESWAP) or POPP (post qualifying).
- Experience of Social Work intervention and assessment within an Adults statutory setting or Health setting.
- Knowledge of legislation, policies and procedures relevant to the post (Care Act 2014, Mental Health Act 1983, Mental Capacity Act 2005, Human Rights Act 1998, GDPR).
- Knowledge and experience working in specialised areas eg probation, drug and alcohol, domestic abuse, mental health.
- Knowledge and application of Strengths based and person-centred working. Incorporating risk management and use of Social Work models and theories.
- Knowledge and understanding of partnership working and the positive impact this brings to people in receipt of services.
- Knowledge and experience with working with hard to engage individuals.
- Knowledge and understanding of safeguarding Adults and Children, incorporating Statutory Safeguarding and Non-Statutory Safeguarding aspects.
- High level of written and oral communication skills and an ability to communicate effectively with a wide range of people from all levels within the organisation and community.
- Negotiation and advocacy skills
- Ability to manage an autonomous diary, prioritising duty and same day response work where required.
- Ability to work collaboratively within a multi-disciplinary team and contribute to that team's development.
- Demonstrate experience of undertaking effective assessments with strengths-based outcomes, focusing on the individual.
- Understanding of stressful situations, its impact, and effective management techniques.