



Job Profile and Working for Stockport

Our Council

Join us at Stockport Council – MJ Local Authority of the Year 2025

Our employees are our **greatest asset**. We're proud of the way we provide vital frontline services every day and work together, as **one team**.

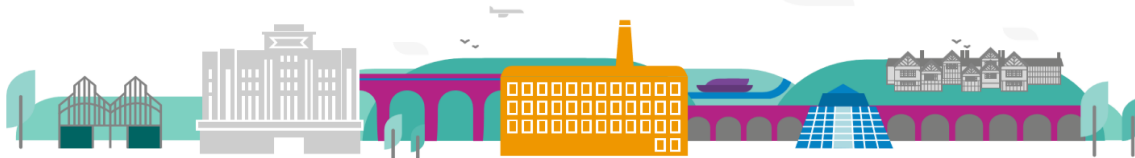
Our 4 **core values** as shown above, run through everything that we do, and we aim to stay **true** to them regardless of the challenges that we may face.

To **support** our values, we have policies, guidance and procedures around health, safety and welfare, customer care, emergency planning and security that all our **colleagues** are adhering and working to.

We also **pride** ourselves on our commitment to wellbeing and inclusivity of our colleagues and residents.

You can find out more about working for Stockport Council and some of the benefits that we offer our employees at <https://greater.jobs/locations/stockport/>





Ambitious Stockport, creating opportunities *for everyone*

About the Job

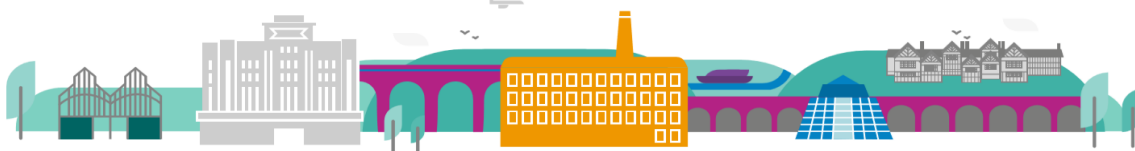
Role:	Team leader (Vision Impairment)
Service Area:	Hearing & Vision Specialist Service
Directorate:	Services to People - Childrens
Salary Grade:	Leadership point 6-10 (Teachers pay and conditions)

Main Purpose of the Job

The postholder will provide operational leadership for the Vision Impairment (VI) Team and the Qualified Specialist Teacher of Multi-sensory Impairment (QTMSI), within Stockport Hearing & Vision Specialist Service. This role leads on the delivery of statutory provision and safeguarding responsibilities for 350 children and young people (C&YP) who have vision impairment/ MSI aged 0–25. The role involves line management, and oversight of the team of 20 VI specialist staff, as well as the provision and outcomes for C&YP on service caseload. The postholder will also have their own direct teaching and/or monitoring caseload of C&YP alongside leadership responsibilities.

Key Responsibilities

- Provide day-to-day operational leadership for the vision impairment team, and (QTMSI) ensuring statutory duties, service and sensory impairment sector quality standards and expectations are met.
- Line -manage specialist staff on a day- to- day basis, including providing consultation, supervision, performance management and professional development, wellbeing, and attendance support
- Coordinate allocation of the team's individual caseloads, aligned to fair allocation of VI/ MSI specialist provision for C&YP, timetabling, deployment, and cover arrangements to enable continuity of provision.
- Lead the allocation, monitoring, and review of specialist provision for children and young people with VI aged 0–25, in line with SEND and statutory requirements including finance.
- Provide direct specialist teaching, interventions, advice, training, monitoring for C&YP on caseload (at least 0.4FTE, 2 days equivalent per week, dependent on service needs).
- Be responsible and accountable for the safeguarding of C&YP as Deputy Designated Safeguarding Lead (DSL) in accordance with local and educational settings procedures.
- Triage and manage new referrals to the service, ensuring compliance with specialist sector standards.
- Promote and enable the highest quality teaching and inclusive practice in educational settings from the VI team and colleagues in settings.



Ambitious Stockport, creating opportunities for everyone

- Quality assure specialist advice, plans and reports, including statutory EHCP advice, to ensure accuracy, consistency, and compliance with relevant standards.
- Be responsible for prioritizing the ordering, maintenance and updating of specialist VI technology and materials for the office and for individual C&YP, in line with service budget allocations and pressures. Be pro-active and responsive to new initiatives, developing knowledge in the VI specialist sector.
- Liaise with parents/carers, educational settings, and partner agencies to resolve complex queries and support positive outcomes.
- Organise and be involved in the delivery of a range of borough wide training related to visual impairment.
- Lead the development of the VI team via a development plan, and contribute to whole service development, audits, and inspection readiness.
- Work positively and inclusively with colleagues and customers so that the Council provides a workplace to deliver a service that does not discriminate against people on the grounds of their age, disability, gender reassignment, marriage, civil partnership, pregnancy, maternity, race, religion, belief, sex, or sexual orientation.
- Fulfil personal requirements, where appropriate, with regards to Council policies and procedures, standards of attendance, health, safety and welfare, customer care, emergency, evacuation, security, and promotion of the Council's priorities.

Additional Information

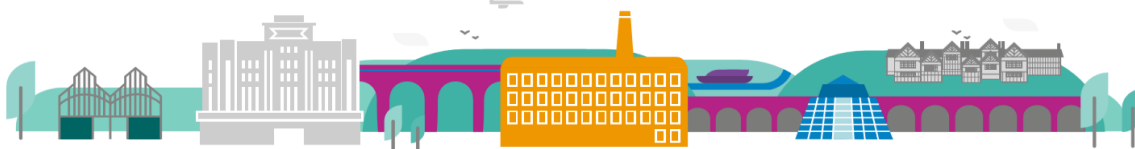
The responsibilities set out in this document, in the advert and any additional information are intended to provide a flavour of the work you will carry out. It is not possible to include everything you will be asked to undertake, and we expect all colleagues to work flexibly according to business needs and to enhance your own development. Your skills, abilities and training needs will be considered and discussed with you when any significant changes to your role are needed. In line with our flexible approach, you may be required to work from home for a proportion of your time or from any of the Council's sites across the borough.

The Council is an inclusive employer and holds the Disability Confident and Armed Forces Covenant accreditations. If you have a disability, we will support you by implementing reasonable adjustments to enable you to perform your role.

About You

Please use your application to tell us how well you meet the criteria listed below as these are the key skills, experience, technical expertise and qualifications needed to be successful in the role. We will then use all the information you provide in your application to help us decide whether you are shortlisted for interview. Any interview questions or additional assessments such as tests or presentations may also be broadly based on these criteria:

- Working to the Council's values and behaviours by:
 - Keeping the people of **Stockport** at the heart of what we do
 - Succeeding as a **team**, collaborating with colleagues and partners
 - Driving things forward with **ambition**, creativity, and confidence
 - Showing value and **respect** to our colleagues, partners, and customers.
- Qualified Teacher status, with experience -Essential



Ambitious Stockport, creating opportunities *for everyone*

- Qualified Teacher of Vision impairment status with substantial experience across key stages and both mainstream and specialist settings -Essential
- Additional SEN qualification or training-Desirable
- Extensive experience of direct teaching, provision allocation, assessment, and interventions for VI C&YP, including those with complex additional needs
- Experience of supporting, guiding and listening to parents/carers, seeking and responding to their views -and those of C&YP- Essential
- Understanding and experience of all aspects of safeguarding relating to children and young people -Essential
- Line management experience -Desirable
- Substantial experience of multi -agency working-Essential
- Experience of working with others to promote inclusive practice -Essential
- Evidence of a leadership skill set: goal setting, caseload, and time management for self and others-Essential
- Knowledge of SEND processes, funding, and policy in both national and local contexts-Essential
- Direct knowledge and experience of providing clear written statutory advice to LA SEND panels- which include their view of C&YP and their parents/carers -Essential
- Knowledge of vision impairment sector- specific organisations, relevant standards, and curricula -Essential
- Technologically competent in work -based computer and multi-systems applications, including specialist VI technologies-Essential
- Highly effective communication, presentation and inter- personal skills- Essential
- Ability to develop and maintain effective working relationships- Essential
- Ability to manage and support team and individual performance and wellbeing-Essential
- Ability to take initiative, make decisions and implement them effectively, and initiate or manage change where appropriate-Essential
- Ability to manage competing operational priorities and co-ordinate and support individuals working across multiple settings- Essential
- Evidence of Continued Professional Development-Essential
- Full driving licence with ability to travel in borough, with use of car for work-Essential
- Willingness to undertake further training / professional development as required-Essential
- Understands and actively supports Stockport Councils diversity and equality policy-Essential
- Meets Stockport Council's standard of attendance-Essential
- A willingness to be flexible in a changing environment-Essential