



Job Profile and Working for Stockport



Stockport

to keep the people of Stockport at the heart of what we do.

Team

to succeed as a team, collaborating with colleagues and partners.

Ambition

to drive things forward with ambition, creativity and confidence.

Respect

to value and respect our colleagues, partners and customers.

Our Council

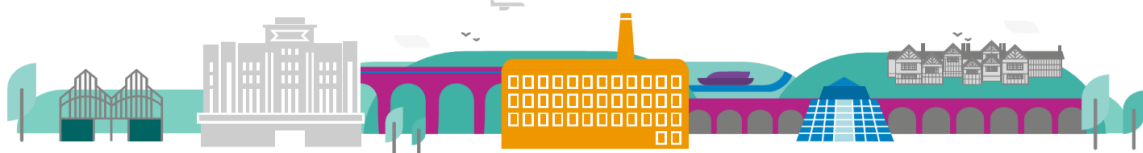
Our employees are our **greatest asset**. We're proud of the way we provide vital frontline services every day and work together, as **one team**.

Our 4 **core values** as shown above, run through everything that we do, and we aim to stay **true** to them regardless of the challenges that we may face.

To **support** our values, we have policies, guidance and procedures around health, safety and welfare, customer care, emergency planning and security that all our **colleagues** are adhering and working to.

We also **pride** ourselves on our commitment to wellbeing and inclusivity of our colleagues and residents.

You can find out more about working for Stockport Council and some of the benefits that we offer our employees at <https://greater.jobs/locations/stockport/>



About the Job

Role:	Specialist Teacher of children and young people with vision impairment
Service Area:	Hearing and Vision Specialist Service
Directorate:	Services to People - Childrens
Salary Grade:	MPS/UPS plus SEN allowance depending on qualifications: min SEN award if not yet qualified, max SEN award if qualified.

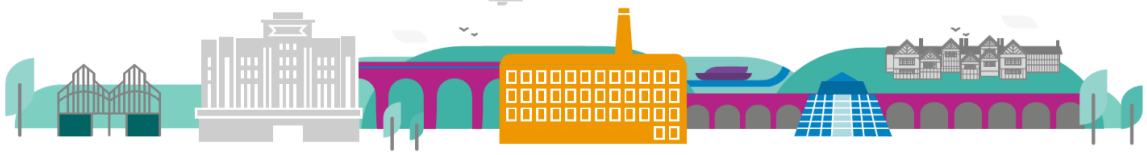
Main Purpose of the Job

To carry out the duties of Teacher of children and young people with vision impairment (TVI) to ensure their access to high quality inclusive education in a range of settings throughout Stockport Local Authority.

Key Responsibilities

The post holder is required to carry out the full range of professional duties of a school teacher as set out in The Schools Teachers' Pay and Conditions document, and specifically as a teacher of children and young people with vision impairment with the range of responsibilities below:

- To provide advisory and direct teaching specialist provision for children and young people with vision impairment in their educational settings.
- To enable parents and carers to promote the development and education of their child.
- To contribute to the delivery of professional development programmes for schools and other educational settings that raise awareness of vision impairment and support the effective inclusion of children and young people.
- To assist in the devising, delivery and monitoring of Education Health Care plans and SEND support plans for children and young people with vision impairment.
- To carry out duties relating to the identification and assessment of children and young people with vision impairment.
- To write plans and reports, contributing evidence to support the development and progress of children and young people with vision impairment.
- To carry out duties in contributing to and attending relevant formal and informal progress review and multi-agency meetings.
- To contribute to the service development plan for the Hearing and Vision Specialist Service and the monitoring and evaluation of service delivery as a whole.



- To regularly update both general and specialist professional knowledge and skills through appropriate continuing professional development.
- To take part in the local authority performance management procedures.
- To correctly direct and support the use, management and maintenance of specialist technology used by children and young people with vision impairment and to provide training in the effective use of technology to other professionals, parents and carers.
- To work in partnership with other colleagues in the team, in particular supervising and directing the work of Vision–Specialist Inclusion Practitioners.
- To work in a multi-agency way to ensure a co-ordinated and seamless service delivery for children and young people who have vision impairment.
- To work positively and inclusively with colleagues and service users so that the Council provides a workplace to deliver a service that does not discriminate against people on the grounds of their age, disability, gender reassignment, marriage, civil partnership, pregnancy, maternity, race, religion, belief, sex, or sexual orientation.
- To fulfil personal requirements, where appropriate, with regards to Council policies and procedures, standards of attendance, health, safety and welfare, customer care, emergency, evacuation, security and promotion of the Council's priorities.

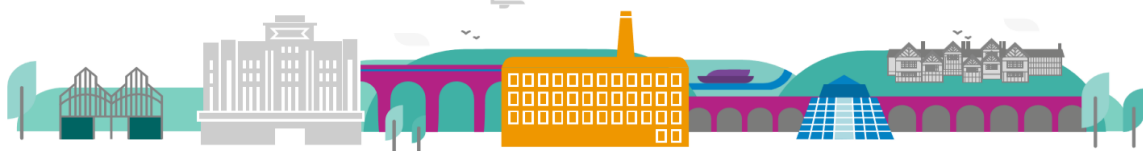
Additional Information

The responsibilities set out in this document, in the advert and any additional information are intended to provide a flavour of the work you will carry out. It is not possible to include everything you will be asked to undertake, and we expect all colleagues to work flexibly according to business needs and to enhance your own development. Your skills, abilities and training needs will be taken into account and discussed with you when any significant changes to your role are needed. In line with our flexible approach you may be required to work from home for a proportion of your time or from any of the Council's sites across the borough.

The Council is an inclusive employer and holds the Disability Confident and Armed Forces Covenant accreditations. If you have a disability, we will support you by implementing reasonable adjustments to enable you to perform your role

About You

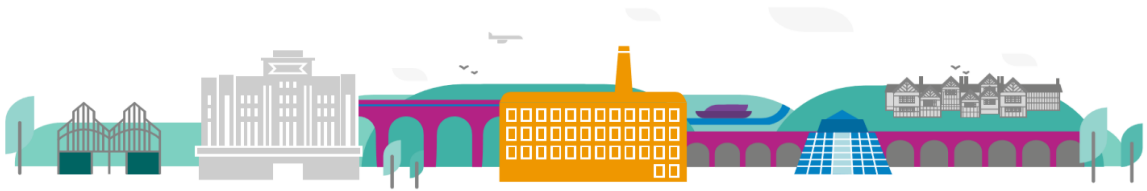
Please use your application to tell us how well you meet the criteria listed below as these are the key skills, experience, technical expertise and qualifications needed to be successful in the role. We will then use all the information you provide in your application to help us decide whether you are shortlisted for interview. Any interview questions or additional assessments such as tests or presentations may also be broadly based on these criteria:



	Essential /Desirable
DfE Qualified Teacher Status	Essential
Qualified Teacher of Children and Young People with VI	Desirable
Ability to work effectively across a wide age range including mainstream and /or special school environments.	Essential
Experience of teaching children and young people with vision impairment in mainstream, particularly early years, secondary, special schools or post 16.	Desirable
Knowledge of the developmental and educational implications of vision impairment	Essential
Evidence of ability to assess the needs of children and young people with vision impairment	Essential
Evidence of ability to effectively teach, plan and implement programmes of intervention linked to the Specialist Curriculum Framework for Vision Impairment	Essential
Evidence of ability to effectively track, monitor and evaluate the progress of children and young people.	Essential
Knowledge of Braille	Desirable
Willingness to learn Braille	Essential
Additional specialist qualifications in the field of vision impairment	Desirable
Knowledge and understanding of recent developments and legislation in relation to SEND, inclusion and vision impairment	Essential
Good IT skills including ability to use IT effectively for administrative skills and curriculum delivery.	Essential
Demonstrate a high level of confidence in teaching and family work roles	Essential
Be able to work independently, seeking direction only where necessary	Essential
Show initiative and autonomy in relevant and appropriate decision -making processes	Essential
Resolve conflicts effectively and diplomatically, displaying good inter-personal skills	Essential
Adapt quickly to changing circumstances, challenges and barriers, maintaining composure and positivity	Essential
Empower parents and carers through clear unbiased advice and guidance, conveying self -assurance and capability	Essential
Flexible, with the ability to work collaboratively in a team.	Essential
Skills in offering training to other professionals	Essential
To understand and meet the expectations for safeguarding of children and young people	Essential
Current driving licence with ability to travel between schools in the borough with use of car for work.	Essential
Evidence of ongoing professional development and willingness to undertake further training / professional development as required	Essential

To work to the Council's values and behaviours by:

- Keeping the people of **Stockport** at the heart of what we do



- Succeeding as a **team**, collaborating with colleagues and partners
- Driving things forward with **ambition**, creativity and confidence.

Showing value and **respect** to our colleagues, partners and customers.