

## Role profile – Waste Crimes Investigation Officer

- **Location:** Green Lane Depot, Green Lane, Heywood
- **Salary:** Grade 7 £36,363 to £39,862
- **Annual Leave:** minimum 26 days holiday increasing with service
- **Benefits:**
  - Parking available
  - Flexible working hours
  - Staff Groups, including Gardening, Menopause Café & Crafting
  - Lifestyle savings platform (Vivup)
  - Discounted Gym membership
  - Workplace Wellbeing initiatives

## Succeed at Rochdale

- **Support to thrive and develop your career**
- **Progression opportunities**
- **Culture of learning & development**
- **Ambitious plans for the future**
- **Wellbeing support**
- **Best Corporate Workplace in the UK**
- **Fabulous transport links**

## Overview - duties

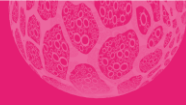
- Lead proactive, intelligence-led investigations into fly-tipping and household waste offences, identifying offenders and building robust cases for enforcement action.
- Deliver effective enforcement outcomes through the use of fixed penalties, statutory notices, and prosecution, ensuring compliance with relevant legislation.
- Target environmental crime hotspots using data, surveillance, and maximised deployment of mobile CCTV to prevent, detect and deter offences.
- Work closely with partners, stakeholders and local communities to disrupt waste crime, promote compliance, and support long-term behaviour change.

## Purpose - objectives

- To deliver a proactive response to fly-tipping and waste crime across Rochdale, improving neighbourhood quality through effective investigation, enforcement, and partnership working. The role focuses on achieving visible outcomes by identifying offenders, reducing incidents, and increasing public confidence in the Council's approach.
- The role involves leading high-quality investigations, taking timely enforcement action, and maximising intelligence and CCTV to detect and deter offences. It will support continuous improvement of operational and strategic approaches, working with partners, Members, and communities to prevent environmental crime and deliver cleaner, safer neighbourhoods.

**Succeed  
at Rochdale**

## Person specification



## Assessed via Application Form

### Skills, Experience & Knowledge

- |   |  |
|---|--|
| <ul style="list-style-type: none"><li>• Experience of investigating environmental or waste-related offences and determining appropriate enforcement outcomes.</li></ul> | <ul style="list-style-type: none"><li>• Ability to analyse information and prioritise investigations using an intelligence-led approach.</li></ul> |
| <ul style="list-style-type: none"><li>• Ability to prepare legally robust case files and support prosecution proceedings.</li></ul>                                     | <ul style="list-style-type: none"><li>• Experience of engaging with stakeholders, partners, and the public to resolve issues.</li></ul>            |
| <ul style="list-style-type: none"><li>• Experience of working within an enforcement, regulatory, or investigative role.</li></ul>                                       | <ul style="list-style-type: none"><li>• Experience of maintaining accurate records and using databases to support enforcement activity.</li></ul>  |
| <ul style="list-style-type: none"><li>• Knowledge of relevant legislation (e.g. Environmental Protection Act, PACE, CPIA).</li></ul>                                    |  |
|   |  |

### Value

Pioneering, Passionate & Proud

Succeed  
at Rochdale

## Person specification



The remainder of the person specification will be assessed at stage 2 of the recruitment process

### Skills and experience

### How assessed (A, I, P Assessment, Interview, Presentation)

Ability to conduct structured investigations and follow clear lines of enquiry.	Interview, Presentation
Experience of taking appropriate enforcement action and justifying decisions.	Interview, Presentation
Ability to communicate effectively with a wide range of stakeholders, including under challenge.	Interview
Experience of building partnerships to achieve enforcement outcomes.	Interview
Ability to manage competing priorities and deliver results under pressure.	Interview, Presentation
Experience or understanding of using CCTV or surveillance to support enforcement activity.	Interview, Presentation

### Knowledge

### How assessed (A, I, P Assessment, Interview, Presentation)

Knowledge of environmental and waste legislation and how it is applied in practice.	Interview,
Understanding of investigative processes, including evidence gathering and case building.	Interview, Presentation
Knowledge of legal frameworks such as PACE, Disclosure and CPIA.	Interview, Presentation
Understanding of data protection, surveillance, and lawful use of CCTV.	Interview
Awareness of current challenges and best practice in tackling fly-tipping and waste crime	Interview, Presentation