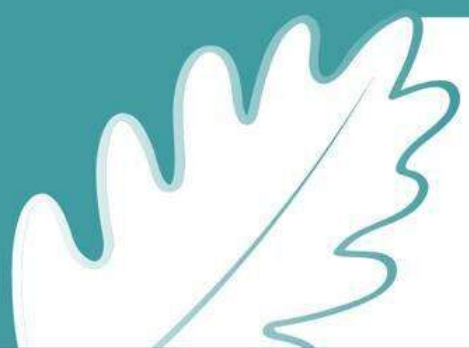




# Work with us



**Oak**   
Learning Partnership

**Inclusion** is at the  
**heart** of our trust

## Introduction to Our Trust

Dear Candidate,

Thank you for your interest in this post at Oak Learning Partnership.

Our trust is cross phase and consists of primary, special, and secondary schools. We have a vision to transform lives through a highly inclusive approach. 'Inclusion is at the heart of our trust'. Which means we are compassionately rigorous and support all of our pupils to reach their full potential, have unconditional positive regard, leave no one behind and everyone is welcome.

Our schools work closely with one another; they collaborate with purpose, support each other and share collective systems across both educational and business provisions. But it's also important to us that each school has their own identity and individuality. We focus on impact, always making sure common sense is at the heart of our decision making, ensuring clarity and consistency from our leaders.

Our people matter; we understand that we can only achieve our vision by recruiting the right people and providing them with the support, training and time they need to allow them to flourish and be the best that they can be.

Whatever role an individual undertakes within our organisation, they are contributing to our collective aim of transforming lives. We invest heavily in our people ensuring they feel valued, and their well-being is always considered. We understand that if staff feel valued and if the impact they are having is recognised, they can perform at their best.



# Inclusion is at the heart of our trust

Ash Grove School, formally Spring Lane School, is a specialist Pupil Referral Unit, dedicated to providing tailored education and support for young people facing challenges in mainstream education. We offer a nurturing and structured environment where students can re-engage with learning, develop resilience, and achieve personal success. Our dedicated staff work closely with students, families, and external agencies to ensure that every child receives the support they need to thrive.

We are laying strong foundations for growth and have a clear vision for the trust. This role is a key part of our growth strategy and could be an excellent opportunity for the right candidate ready for their next step. We are a values driven organisation, are highly ambitious, passionate about doing things with integrity whilst maintaining a good sense of humour.

If you want to make a difference to young people and join a trust at an exciting part of its journey, we would love to hear from you.

*James F-Smith*

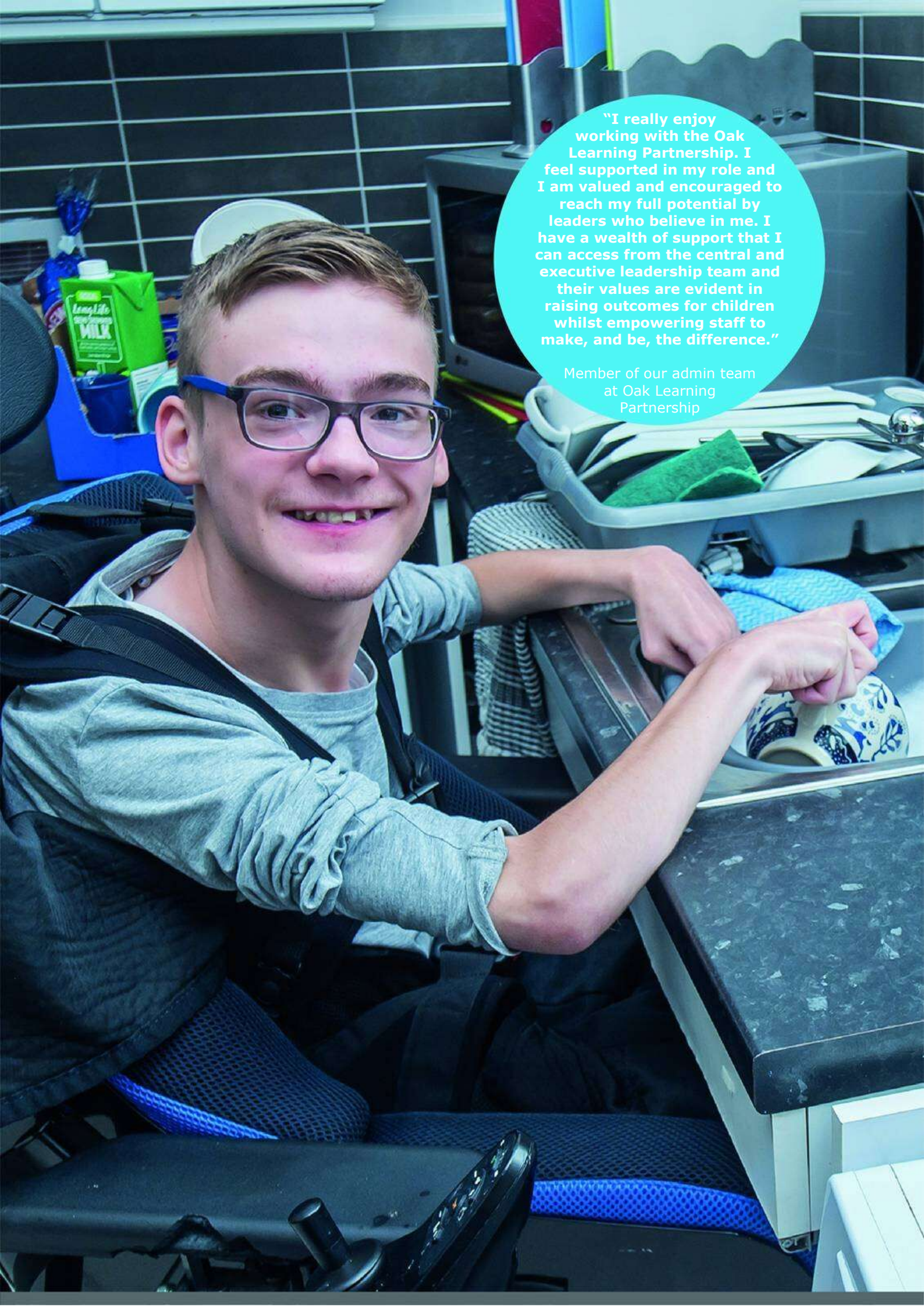
**James Franklin-Smith**  
**CEO of Oak Learning Partnership**



A young boy with short brown hair is shown in a close-up, focused on playing a violin. He is wearing a blue sweater. The background is a library with bookshelves filled with books. A teal circular graphic is overlaid on the right side of the image, containing a quote and a title.

**“Every day is different, with opportunities to learn new skills and work together to find solutions. It’s a great place to work with a fantastic team of dedicated staff.”**

Member of our Pastoral Team at Oak Learning Partnership



**"I really enjoy working with the Oak Learning Partnership. I feel supported in my role and I am valued and encouraged to reach my full potential by leaders who believe in me. I have a wealth of support that I can access from the central and executive leadership team and their values are evident in raising outcomes for children whilst empowering staff to make, and be, the difference."**

**Member of our admin team  
at Oak Learning  
Partnership**

**Ash Grove School**  
New Kershaw Centre  
Deal Street  
Bury  
BL9 7PZ

0161 724 2900

[enquiries@ashgrove.oaklp.co.uk](mailto:enquiries@ashgrove.oaklp.co.uk)



**Oak**   
Learning Partnership