



Haslingden High School and Sixth Form

Teacher of Design and Technology

# APPLICATION PACK



HEADTEACHER: MR R CLARKE (BA HONS)



# VACANCY INFORMATION

Teacher of Design and Technology

MPR1 – UPR3 £32,916 - £51,048

Required September 2026 (Applications for part-time working arrangements will be considered)

We are currently seeking to appoint a hardworking, committed and enthusiastic individual to join our Design and Technology Faculty. We are looking for someone who would describe themselves as a team player, as possessing a positive mindset and someone who will maintain a solution focussed approach. We will also consider applications from individuals who are used to working in mediums outside those which we currently offer (Materials, Designing, Systems and Control). A sense of humour, a smile and empathy for young people and colleagues are all essential characteristics needed to be successful in this post. If this sounds like you, we look forward to reading your application.

Further details and an application form are available on our website: [www.haslingdenhigh.com/vacancies/](http://www.haslingdenhigh.com/vacancies/)

Haslingden High School and Sixth Form is committed to safeguarding and promoting the welfare of children and young people and takes its statutory duties and responsibilities in this context very seriously. We fully expect everyone working in or behalf of the school to share our commitment. As such, this post is subject to satisfactory DBS clearance and references.

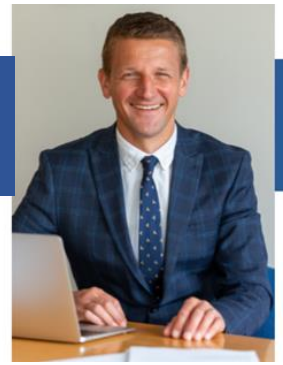
Applications close: 9am Thursday 30 April 2026

Interview date: w/c Monday 4 May 2026



# Haslingden High School and Sixth Form

Headteacher: Russell Clarke (BA Hons)



Dear Applicant

## Post: Teacher of Design and Technology

Thank you for your interest in the post of Teacher of Design and Technology at Haslingden High School and Sixth Form. This is an excellent opportunity to join a successful department that has ambitious plans for the future and has a record of achieving strong academic results. The successful candidate should share our passion for creating and maintaining the best possible learning environment for our students, securing positive outcomes and have a willingness to contribute to the rich extra-curricular provision.

I am extremely proud to be the headteacher at Haslingden High School and Sixth Form, a successful, caring and high performing 11-18 school in the beautiful Rossendale Valley. The school is regularly, heavily oversubscribed for the 270 places available in year 7 each September. We have a thriving sixth form with over 250 students studying mainly a range of Level 3 courses. We are a truly comprehensive school welcoming students of all backgrounds and abilities and are the largest maintained school in Lancashire, with over 1600 students on roll. There are just under 100 members of the teaching staff and approximately 70 support staff. Our supportive, experienced governing body play a crucial role in our success and provides clear direction, remaining heavily involved in the life of the school.

Our overarching aim is **Achievement for All**: for all our students to be safe, happy and successful, developing as individuals into caring, responsible citizens equipped for life in the 21st century. This is underpinned by the five [school aims](#) and we invite you to look at these closely when considering your application.

We strive to create successful learners and we believe that we achieve this by offering an exciting, ambitious and inclusive curriculum. The consistently high-quality teaching and learning, taking place in a safe, supportive environment provides the basis upon which our students grow. We are passionate about providing access to a wide range of opportunities and experiences beyond the taught curriculum, guiding and helping students to become kind, resilient and ethical individuals who will make a positive contribution to their local community and beyond. We hope that you will also share this passion and on reading the [whole school curriculum rationale](#), you feel it closely aligns to your own vision for education.

Students' physical, mental and emotional wellbeing is at the forefront of everything we do. We recognise the importance of working in partnership with parents and external agencies to deliver a personalised approach to care, guidance and support that will ensure students feel safe and happy and that they are empowered to make informed choices, both now and in the future.

At Haslingden High School, success is defined in its broadest sense: students achieve a wide range of qualifications which equip them with the skills and knowledge to enable them to be ambitious, resilient and capable learners. They are able to embrace change, and leave us as well-rounded individuals with a strong set of values and beliefs.

We are proud of our collective achievements – our examination success, our well designed and expertly delivered curriculum, the depth and diversity of our extra-curricular programme and our desire to contribute to our community. We are committed to the pursuit of the highest possible academic, personal and moral standards and to the development of informed citizens with lively, enquiring minds.

This commitment is underpinned by a belief in hard work and a culture of care, respect and support for others. If you share our ethos and feel that you want to join our dedicated staff to help us achieve our aims together, then we believe that Haslingden High School and Sixth Form is the place for you.

The successful applicant will find caring, friendly and supportive colleagues, committed to providing the very best life chances for all our students. We look forward to receiving your completed application form, together with a letter of application which should be no more than 2 sides. This should demonstrate how your skills, experience and vision make you a strong candidate for this position and clearly outline your strengths in relation to the role. The closing date for applications is **Thursday 30 April at 9.00am** with interviews scheduled for **week commencing Monday 4 May 2026**.

Haslingden High School and Sixth Form is committed to safeguarding and promoting the welfare of children and young people and takes its statutory duties and responsibilities in this context very seriously. We fully expect everyone working in or on behalf of the school to share our commitment. As such, this post is subject to satisfactory enhanced DBS clearance and references.

Yours faithfully

A handwritten signature in black ink, appearing to read 'Russell Clarke'. The signature is fluid and cursive, written over a light blue horizontal line.

Russell Clarke  
Headteacher



## OUR SCHOOL AIMS

Achievement for All: for all our students to be safe, happy and successful, developing as individuals into caring, responsible citizens equipped for life in the 21st century

### We strive to:

**Create successful learners**, who achieve the best possible qualifications, alongside equipping them with the skills and motivation to overcome future challenges

**Ensure all students experience an exciting, ambitious and inclusive curriculum** that is well-planned, broad, diverse and expertly delivered. Our curriculum will inspire and motivate all students to want to know and remember more, allowing them to become lifelong learners

**Provide access to a wide range of opportunities** and experiences beyond the taught curriculum, enabling all our students to leave our school with high aspirations

**Work in partnership to offer a personalised approach to care, guidance and support** that will ensure all students feel and know how to keep themselves safe and happy. Students' physical, mental and emotional wellbeing is at the forefront of everything we do, empowering them to make informed choices

**Guide students, helping them to become kind, resilient and ethical individuals** who will make a positive contribution to their local community and beyond. They will embrace change and leave as well-rounded individuals with a strong set of values and beliefs

# FACULTY INFORMATION



## Design and Technology Faculty

The Design and Technology faculty at Haslingden High School and Sixth Form consists of a strong and supportive team of dedicated staff who have wide-ranging knowledge and expertise and a wealth of experience across all areas and disciplines. In addition to the Curriculum Leader and Assistant Curriculum Leader, the faculty has three further full-time teachers and another two who teach part-time in the faculty. We are supported by a part-time technician in food and a full-time technician in D&T. We are looking for the right person to compliment this already strong team, who understands D&T holistically and has ideas about how we can further develop.

The faculty has some excellent facilities; we have fully embraced new technology whilst being in the fortunate position to be able to keep some of the more 'traditional' approaches. For example, we have 3D printers and two high-quality laser cutters, together with two dedicated computer suites. In addition to this, the faculty has one food room, a large multi-purpose classroom with additional networked PCs, preparation areas and two very large workshops, both of which have separate areas for practical work and designing and are generously equipped with a wide range of machines, tools and equipment.

Consequently, this means that we are able to offer a diverse, ambitious and 'hands-on' curriculum. In years 7, 8 and 9 all students currently follow a carousel in which they study materials, systems and control, designing and food in each of the three years. All students in KS3 have one double lesson (1 hour 40 minutes) each week in which to develop knowledge, skills and understanding by undertaking a good balance of focused practical tasks, investigations, design and make activities and academic work. They are taught in mixed ability groups of up to 23 students.

In KS4 students can opt for GCSEs in Design and Technology (currently AQA 8552) and Eduqas Level ½ vocational award in Hospitality and Catering. In addition, we offer the Cambridge National in Health and Social Care at Levels 1/2. In KS5 students can choose A-level Product Design (currently AQA 7552) and the Level 3 Alternative Academic Qualification Cambridge Advanced National in Health and Social Care. The successful candidate will teach D&T across the full ability range in Key Stages 3 and 4, and may also contribute towards A-level Product Design. Our subjects are consistently popular with students at KS4 and 5 and we also offer a wide range of extra-curricular opportunities, including after-school clubs and participation in outside tournaments and competitions.

The D&T faculty at Haslingden is a strong team with excellent facilities and vision for the future. In addition to equipping our students with academic qualifications we aim to develop the whole child and help them become resilient and inquisitive learners. We aim to excite and inspire them to become innovative and creative, by providing a curriculum experience which develops practical and problem-solving skills, technical knowledge and an understanding of our subjects in the world around them. In doing so, this will prepare them for the fast-changing life beyond school. This is a fantastic opportunity for the successful applicant to make a significant contribution to this, and work with talented students and staff in a wonderful school.

# JOB DESCRIPTION



## **Teacher of Design and Technology**

### **Responsible to the Curriculum Leader**

#### **Purpose**

- Contribute to 'achievement for all' by being a champion for the 5 school aims
- To raise standards of student attainment and achievement within your teaching groups and to monitor and support student progress
- To plan and deliver high quality lessons
- To assess and report on the achievement of students
- To act as a form tutor as required

#### **Key Knowledge & Understanding:**

- All teaching staff must understand and uphold the professional code of the General Teaching Council for England by demonstration of all the professional standards for QTS;
- A detailed knowledge of the relevant aspects of the National Curriculum and other statutory requirements and the demands expected of students in relation to KS3, KS4 & KS5.
- Where appropriate, a knowledge of relevant post-16 courses;
- An understanding of subject progression KS2 to KS5.

#### **Key functions**

##### **1. Planning**

- Identify clear learning outcomes, content, lesson structures and sequences appropriate to the subject matter and the students being taught;
- Select and make good use of textbooks, ICT and other learning resources to enable learning outcomes to be met;
- Set appropriate and demanding expectations for students' learning and motivation. Set clear targets for students' learning, building on prior attainment;
- Familiarise yourself with students who have special educational needs, and know where to get help in order to give positive and targeted support. Implement and keep records on Individual Education Plans (IEPs);
- Take account of the needs of all students in each class, including the most and least able;
- Provide opportunities to develop students' understanding by relating their learning to real and work-related examples;
- Maintain records of the delivery of the curriculum and on student progress in line with school and Faculty policy.

## **2. Teaching & Managing Student Learning**

- Use teaching methods with whole classes, groups and individuals that ensure that students are engaged and stimulated; that teaching outcomes are met; that momentum and challenge are maintained and best use made of teaching time;
- Set high expectations for students' behaviour, establishing and maintaining a good standard of discipline through well-focused teaching and through positive and productive relationships.

## **3. Assessment & Reporting**

- Assess how well learning outcomes have been achieved and use this assessment to inform future teaching;
- Mark and monitor students' classwork and homework, providing constructive oral and written feedback and setting targets for students' progress. Work to secure progress towards targets; Prepare and present informative reports to parents;
- Provide accurate data for the school's Monitoring / ARR System as required.

## **4. Guidance & Welfare**

Where appropriate, act as a form tutor, fulfilling the following functions:

- Take overall responsibility for monitoring students' academic and wider progress and development, acting in line with school policies in this area;
- Carry out the tutor group registration, following up any absences as directed by school policy;
- Review progress and support students in target setting and action planning;
- Ensure that all students are valued and treated according to the aims of the school.

## **5. Wider Professional Effectiveness**

- Take responsibility for own professional development, keeping up to date with research and developments in pedagogy and in subject areas;
- Understand professional responsibilities in relation to school policies and practices;
- Set a good example to students in personal presentation and conduct;
- Evaluate own teaching critically, using this to improve effectiveness;
- Work effectively with other school colleagues, attending meetings and liaising with representatives of other agencies as necessary;
- Contribute to, and through faculty assistants organise, displays of work in classroom and faculty areas;
- Contribute positively to the ethos of the school.

For the full Conditions of Employment please refer to the relevant pages of the School Teachers' Pay and Conditions Document.

### Equal opportunities

We are committed to achieving equal opportunities in the way we deliver services to the community and in our employment arrangements. We expect all employees to understand and promote this policy in their work.

### Health and safety

All employees have a responsibility for their own health and safety and that of others when carrying out their duties and must help us to apply our general statement of health and safety policy.

### Safeguarding Commitment

This school is committed to safeguarding and protecting the welfare of children and young people and expects all staff and volunteers to share this commitment.

### Attendance

Good attendance enhances the service delivered by schools, minimises staffing difficulties and ensures best value to the school. It is essential that applicants for positions in this school can evidence a previous satisfactory attendance record/commitment to sustaining regular attendance at work.



## Teacher of Design and Technology

ATTRIBUTES	DESCRIPTION	E	D
<b>QUALIFICATIONS, EXPERIENCE AND PROFESSIONAL DEVELOPMENT</b>	➤ Teaching Qualification	✓	
	➤ Good Honours degree or equivalent	✓	
	➤ A commitment to CPD	✓	
	➤ Experience of teaching A-Level Product Design		✓
<b>KNOWLEDGE, SKILLS AND PERSONAL QUALITIES</b>	➤ A genuine belief in the value of each child	✓	
	➤ A knowledge of the GCSE and NC requirements of the subject with excellent knowledge of Design Technology as a whole	✓	
	➤ A good knowledge and understanding of current curricular developments in Design and Technology	✓	
	➤ The ability to maintain a high standard of teaching which ensures all students are actively engaged in their learning and make excellent progress	✓	
	➤ The ability to establish an excellent climate for learning	✓	
	➤ The ability to work well in a team	✓	
	➤ High levels of commitment, motivation and initiative	✓	
	➤ Ability to use ICT to enhance the quality of learning within the classroom	✓	
	➤ The ability to relate well to all members of the school	✓	
	➤ Excellent communication skills	✓	
	➤ A warmth and empathy when dealing with young people	✓	
	➤ High personal standards and high expectations of themselves and others	✓	
	➤ A flexible approach to school life and someone who embraces change	✓	
	➤ Experience of teaching Design and Technology at KS3 and KS4	✓	
	➤ An excellent health and attendance record	✓	
	➤ An ability to adapt as our curriculum provision develops in line with new technologies	✓	
➤ An ability and willingness to contribute to A-Level Product Design		✓	

	➤ An ability and willingness to contribute to extra-curricular activities	✓	
	➤ A sense of humour	✓	
<b>APPLICATION LETTER</b>	➤ The letter should be clear and concise (no more than two sides) with organised views	✓	
	➤ The letter should address the requirements of the post and clearly indicate why you have applied for the position	✓	
	➤ The application form should be fully completed and clearly legible	✓	

# WELLBEING & MENTAL HEALTH

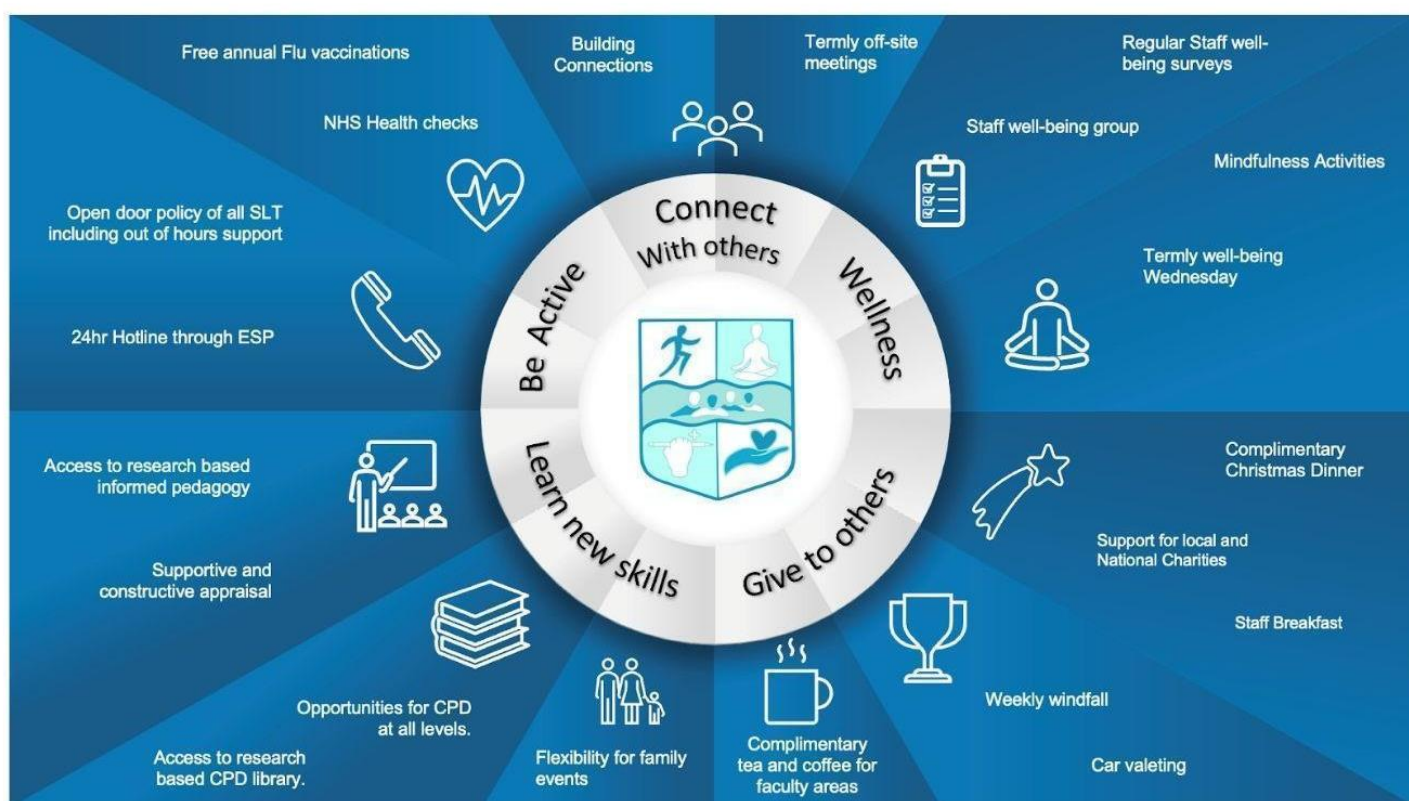
## OUR SCHOOL COMMUNITY STRATEGY



At Haslingden High School and Sixth Form we are committed to supporting the mental health and wellbeing of our students and staff through our proactive approach in advocating positive mental health.

### Our long term strategy:

- Prioritise staff mental health
- Support staff to take responsibility for their own and others wellbeing
- Give leaders access to the tools and resources to support wellbeing
- Revisit the communications policy
- Ensure staff have a voice in decision making
- Drive down unnecessary workload
- Champion flexible working and diversity
- Create a good behaviour culture
- Support staff to progress in their careers
- Protect leaders' wellbeing and mental health
- Hold ourselves accountable for measuring staff wellbeing through the Positive Workplace Survey



# "Haslingden High School continues to be a 'good' school"



Ofsted report 2022

"Pupils behave well...they are keen to learn"

"Staff provide a wide range of enrichment activities"

"Pupils told inspectors that they feel safe...Pupils enjoy strong relationships with one another and with staff"

'Leaders, governors and staff have high expectations of what pupils and students should achieve'

"There is a strong safeguarding culture throughout the school"

"Pupils and students in the sixth form are proud to be part of Haslingden High School and Sixth Form. Pupils told inspectors that this is because it is friendly and welcoming. They enjoy coming to school."



## Useful Information

Thank you for your interest in joining our incredible team of staff here at Haslingden High School and Sixth Form.

Application forms can be found at the bottom of the [vacancies section](#) of our website.

Please email your application to [vacancies@haslingdenhigh.com](mailto:vacancies@haslingdenhigh.com)

If you have any questions, please do not hesitate to get in touch.



**Haslingden High School and Sixth Form**

Broadway, Haslingden, Rossendale, Lancashire, BB4 4EY

01706 215726

[www.haslingdenhigh.com](http://www.haslingdenhigh.com)

 [HaslingdenHigh](#)